

N/F
KU YUNG CHEN
PID 16 171 01 008
ZONED C-1
STONECREST
OVERLAY TIER 3

N/F
PARKLAND COMMUNITIES INC
PID 16 171 02 005
ZONED C-1
STONECREST
OVERLAY TIER 3

N/F
PARKLAND COMMUNITIES INC
PID 16 171 02 012
ZONED C-1
STONECREST
OVERLAY TIER 3

N/F
G AND K COVENANT
PROPERTIES LLC
PID 16 171 02 007
ZONED R-100
STONECREST
OVERLAY TIER 3

N/F
BAILEY, GADDIS DENISE
PID 16 171 02 006
ZONED R-100
STONECREST
OVERLAY TIER 3

N/F
THOMAS POOLE, JR.
STONECREST
OVERLAY TIER 3

DEVELOPMENT SUMMARY	
ZONING	
EXISTING ZONING	R-100
PROPOSED ZONING	MR-1
AREA	
SITE AREA	6.9 ACRES
OPEN SPACE REQUIRED	1.38 ACRES (20%)
OPEN SPACE PROVIDED	1.38 ACRES (20%)
DENSITY	
NUMBER OF UNITS	55 UNITS
PROPOSED DENSITY	8 UNITS/ACRE
MAXIMUM DENSITY	8 UNITS/ACRE
PERIMETER SETBACKS	
FRONT (ADJACENT TO PUBLIC R/W)	15 FEET
SIDE	10 FEET
REAR	10 FEET

RIDGE PLANNING AND ENGINEERING®
1290 KENNESAW CIRCLE, BLDG A
SUITE 200 - MARIETTA, GA 30066
OFFICE 770.938.9000

ZONING PLAN
TURNER HILL TOWNHOMES
LAND LOT 182
16TH DISTRICT
CITY OF STONECREST, GEORGIA

OWNER/DEVELOPER
DOSSEY, LLC
6234 OLD HIGHWAY 5
SUITE D9-250
WOODSTOCK, GA 30188

GSWCC CERTIFICATION NUMBER: 36629
EXPIRATION DATE: 08.01.2021



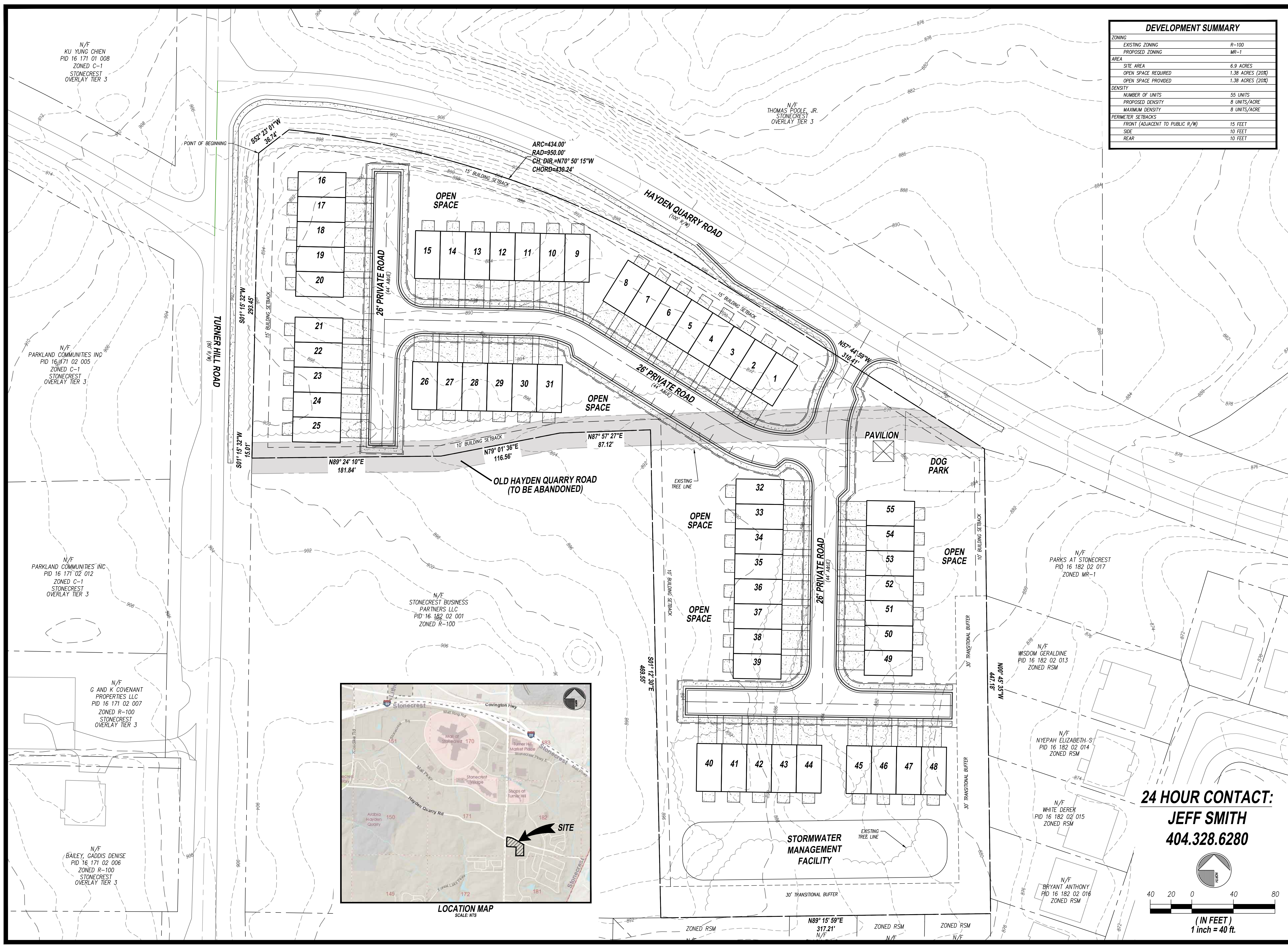
REVISIONS

ZONING PLAN

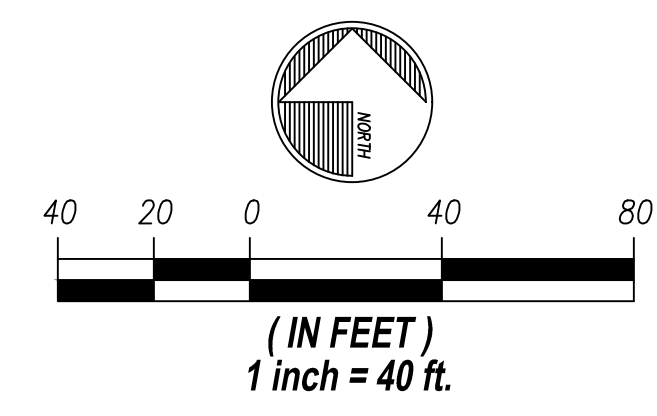
Z100

20060 Z100.DWG

Copyright © 2019



24 HOUR CONTACT:
JEFF SMITH
404.328.6280



ZONED RSM N/F N89° 15' 59"E 317.21' N/F ZONED RSM N/F